

Merz b. Schwanen 

LOOKBOOK
AW2024





SIMPLE IMAGINATION

AW2024

CONTENT

In this look book you find moods, inspiration, overviews of all our products per line as photos, and the new products marked with 'NEW'.

MOOD COLLECTION	4-11
MOOD: ROSEWOOD, CHESTNUT and BERRY TONES	12-23
MOOD: PUMPKIN, RUST, and BERRY	24-41
MOOD: TOFFEE, PUMPKIN, RUST & BLUES	42-50
MOOD: NATURE, CARBON BLUE, CHOCOLATE	51-70
MOOD: WHITE, GRAIN, CHARCOAL, AND BLACK	71-93
NEW PRODUCTS	94-101
ORDER TOOLS	102-109
T-SHIRT COMPARISON	110-115

Dear customers & friends,

SIMPLE IMAGINATION!

The AW24 collection is a captivating embodiment of **the spirit of the Mid-Century and early 70s, a time when imagination reigned supreme.** This collection pays homage to an era characterized by pure lines, new patterns, and bold colors, **where individuals dared to imagine completely new things and embraced innovation as a means of finding their freedom.**

Let's celebrate the power of our imagination!

For your inspiration, we invite you to watch the brief mood presentation attached to this sales kit before working with this lookbook. We promise that watching it is calming, and we hope you will conceive many easy-going, captivating, and innovative ideas and inspirations from this video.

We invite you to dive into the mood of the capturing Mid-Century era, and hope you'll be as excited as us about the new MbS AW24 collection.

You can order easily by placing your order in our convenient and easy-to-use B2B shop, meeting us personally at one of the tradeshow we're showing at, meeting your agents or distributors, or making a virtual appointment with Robert.

We genuinely appreciate your cooperation, support, and trust in us. Whatever you decide on, we sincerely hope to meet all your wishes and demands. We are happy to get your feedback if you have any ideas or comments, and we do our very best to give you the best support and service possible.

So, let's get started ...

We wish you a great season and all the best,

Cheers,

Gitta, Peter,

Robert & the Merz b. Schwanen Team

Dear customers and friends,

Welcome to the AW24 collection, where we invite you to embark on a journey of simple imagination.

This collection embodies **the spirit of the Mid-Century and early 70s**, a time when imagination knew no bounds. It pays homage to an era characterized by pure lines, new patterns, and bold colors, where individuals dared to dream and embraced innovation as a means of finding their freedom.

To inspire your creative process, we encourage you to watch the attached mood presentation, a brief video that captures the essence of the Mid-Century era. We promise that it will provide a calming experience and ignite easy-going, captivating, and innovative ideas and inspirations.

Immerse yourself in the mood of this capturing era and join us in celebrating the new MbS AW24 collection. Ordering is made easy through our convenient and user-friendly B2B shop. Alternatively, you can meet us personally at one of the tradeshow we're showcasing at, connect with your agents or distributors, or schedule a virtual appointment with Robert.

We genuinely appreciate your cooperation, support, and trust in us. Whatever your decision may be, we are committed to meeting all your wishes and demands. Your feedback, ideas, and comments are highly valued, and we strive to provide you with the best support and service possible.

Thank you for being a part of our journey. Let's celebrate the power of imagination together!

So, let's get started ...

We wish you a great season and all the best,

Cheers,

Gitta, Peter,

Robert & the Merz b. Schwanen Team

ABOUT MERZ B. SCHWANEN

We make original, organic,
simply good basics.
Garments for all,
who appreciate good timeless design,
and reliable products
to look and feel good, every day!

Merz b. Schwanen – the good basic!



AW2024 Simple Imagination!

The Merz b. Schwanen AW2024 collection seamlessly blends the essence of **Mid-Century** and **sophisticated early 70s aesthetics**, showcasing a harmonious fusion of timeless design and contemporary influences. The AW24 collection is a captivating embodiment of the spirit of the Mid-Century and early 70s, a time when imagination reigned supreme.

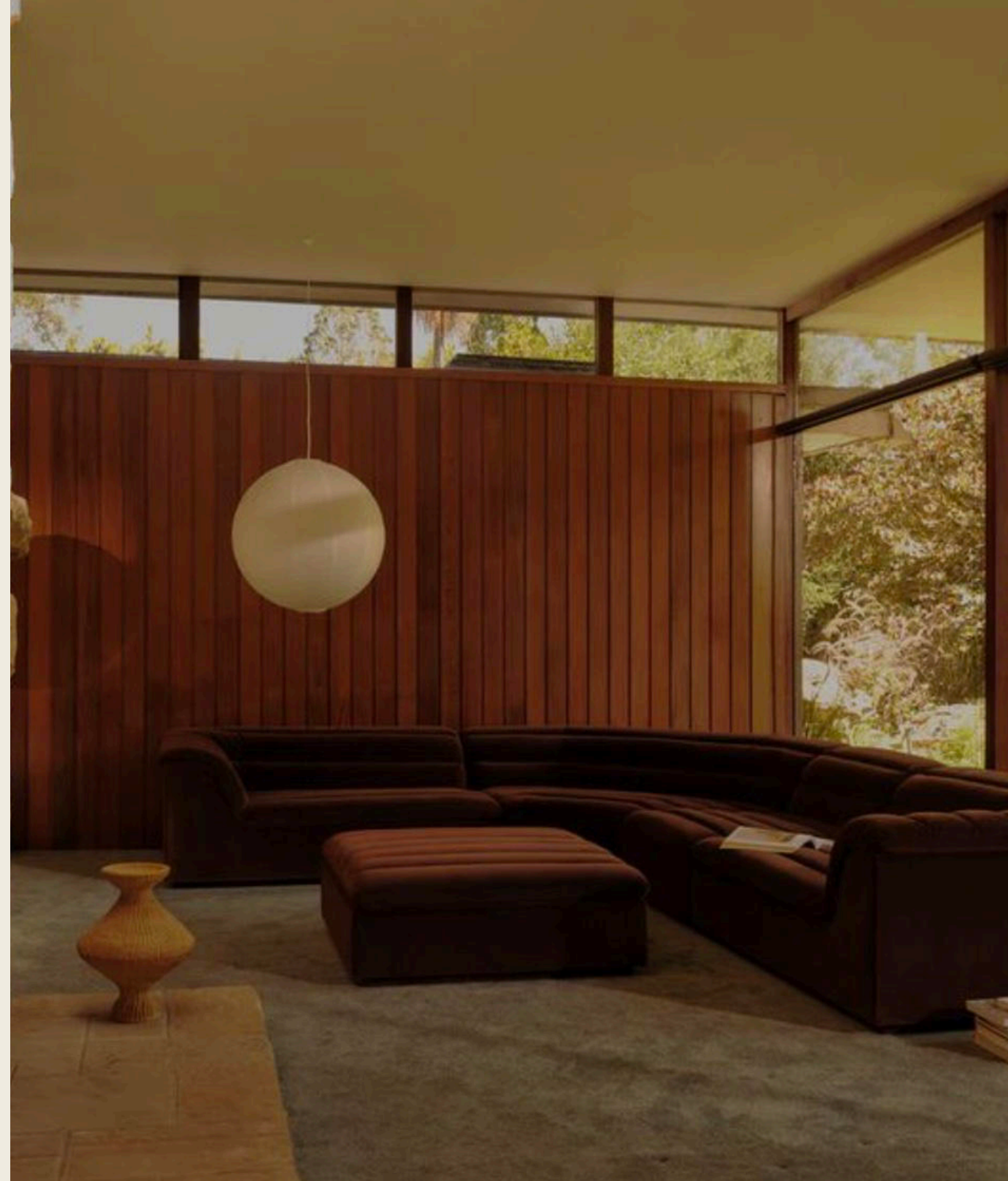
With its source in original German workwear, this collection strikes a perfect balance between functionality and fashion, catering to the modern individual's needs and desires.

The collection embraces natural colors, predominantly brown tones, subtle pumpkin nuances, and highlights of carbon blue and berry violet tones.

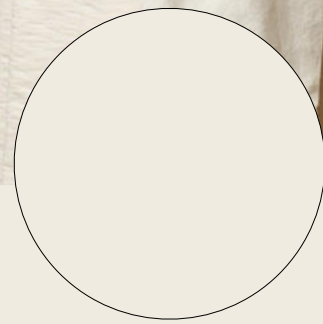
Broken twill and corduroy emerge as a new fabric, while stand-up turtlenecks, ribbed chunky knitwear pullovers, and boxy cropped fits add to the classic and timeless styles and shapes.

This collection pays homage to an era characterized by pure lines, new patterns, and bold colors, where individuals dared to imagine completely new things and embraced innovation as a means of finding their freedom to feel truly well.

Look and feel good. Every day!



AW2024 colors



02 NATURE

608 CARBON BLUE

192 CHOCOLATE



01 WHITE

06 GRAIN

99 DEEP BLACK

The color palette of this collection revolves around natural hues, with an emphasis on brown tones. These earthy shades evoke a sense of warmth and timelessness, creating a harmonious connection to nature.

The use of **carbon blue** adds a distinct and noticeable contrast to the overall color scheme, enhancing the visual appeal.

AW2024 colors



15 CHESTNUT

39 ROSEWOOD

506 BURGUNDY



329 PUMPKIN

15 CHESTNUT

555 PLUM

The color palette of this collection revolves around natural hues, with an emphasis on brown tones. These earthy shades evoke a sense of warmth and timelessness, creating a harmonious connection to nature.

Subtle pumpkin and rosewood nuances add a touch of playfulness and versatility to the collection, allowing for easy integration into various settings. To provide contrast and depth, **hues of dark burgundy and berry tones** are strategically incorporated, adding a contemporary twist to the overall aesthetic.

AW2024 colors



11 TOFFEE

29 RUST

51 DARK NAVY

Warm and earthy hues such as toffee and chestnut are harmoniously combined with **strong and dark blue tones**, creating a **captivating contrast**.

The natural colors, such as toffee and chestnut, add a touch of warmth and richness to the collection, while the **strong orange tones infuse a vibrant and energetic feel**.

The combination of these colors results in a visually striking and balanced collection that is sure to make a statement.

INSPIRATION for the MbS AW2024 COLLECTION

Introduction:

The Merz b. Schwanen AW2024 collection seamlessly blends the essence of Mid-Century and sophisticated early 70s aesthetics, showcasing a harmonious fusion of timeless design and contemporary influences. With its source in original German workwear, this collection strikes a perfect balance between functionality and fashion, catering to the modern individual's needs and desires.

The collection embraces natural colors, predominantly brown tones, subtle pumpkin nuances, and highlights of carbon blue and berry violet tones.

Additionally, broken twill and corduroy emerge as new fabrics, while stand-up turtlenecks, ribbed chunky knitwear pullovers, and boxy cropped fits add to the classic and timeless styles and shapes.

Mid-Century and Early 70s Influence:

The **Mid-Century** era, known for its clean lines and minimalist approach, serves as a foundation for this collection. It emphasizes simplicity and functionality, which are reflected in the overall design and silhouettes. The early 70s, on the other hand, introduced a sense of freedom and experimentation, allowing for more expressive and vibrant elements to be incorporated.

Color Palette:

The color palette of this collection revolves around **natural hues, with an emphasis on brown tones**. These earthy shades evoke a sense of warmth and timelessness, creating a harmonious connection to nature. **Subtle pumpkin and rosewood nuances** add a touch of playfulness and versatility to the collection, allowing for easy integration into various settings.

To provide contrast and depth, highlights of a **bold carbon blue and hues of dark burgundy and berry tones** are strategically incorporated, adding a contemporary twist to the overall aesthetic.

Fabrics:

Two of the notable fabric choices in this collection are **broken twill and medium as well as bold striped corduroy** made of organic cotton.

Especially textured corduroy, with its distinctive ridges or "wales," adds depth and visual interest to the garments, while adding a sophisticated touch of a Mid-Century impression. Corduroy's durability and versatility make it an ideal choice for workwear-inspired pieces, aligning perfectly with the collection's overall theme. Its ability to hold shape and provide warmth ensures both functionality and style.

Styles and Shapes:

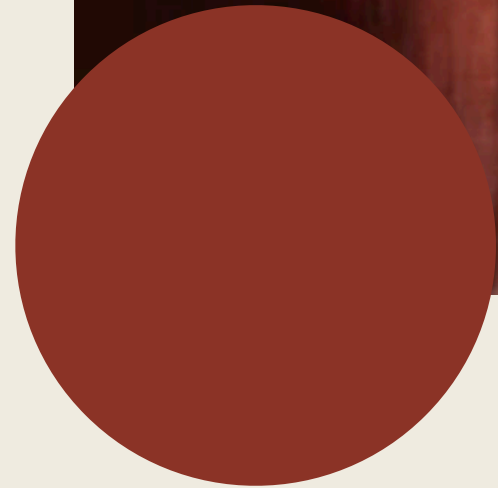
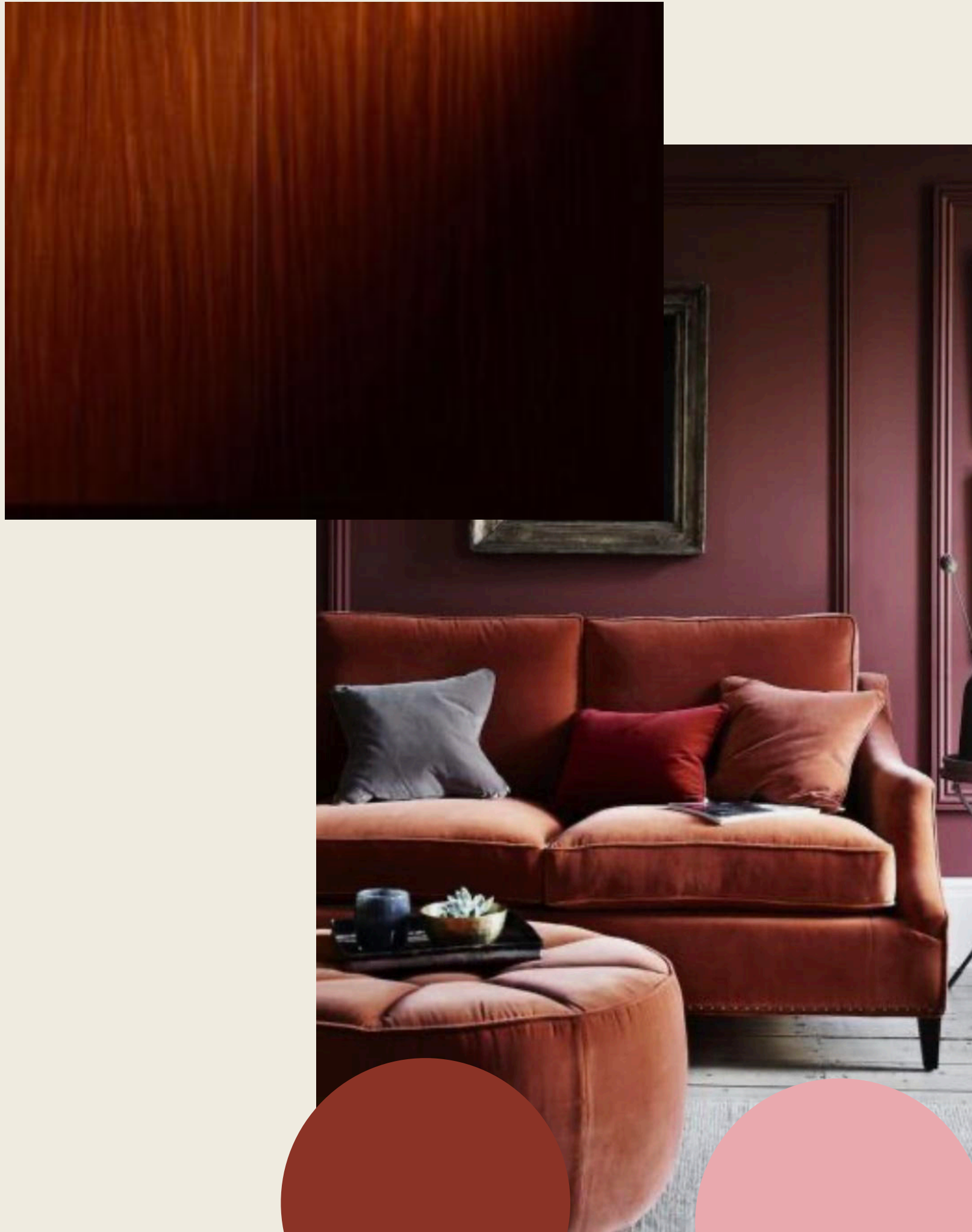
The collection embraces knitted **stand-up collars and turtlenecks** as eye-catching styles and shapes. This classic yet contemporary design element adds sophistication and versatility to the garments and the all-over theme. The high neckline not only provides warmth but also exudes a sense of elegance and refinement. **Contemporary styles combined with the Mid-Century and early 70s influences create a unique fusion of modern and timeless aesthetics**. Workwear-influenced jacket designs of bold corduroy, chunky waffle structured and ribbed pullovers of all-natural wool qualities, the chinos and a variety of accessories complement the well-known jerseys and sweatshirts.

Original German Workwear Influence:

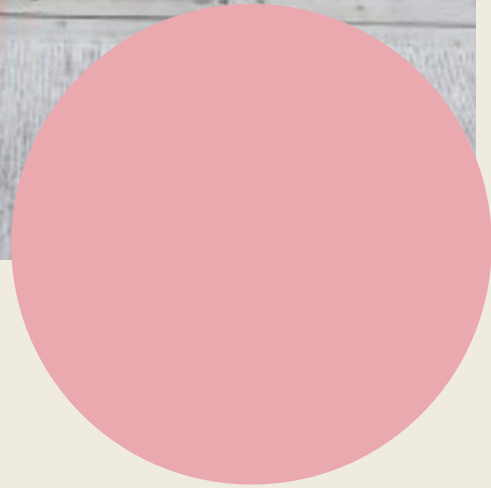
The perpetual **original German workwear** influence in the MbS collections adds a practical and utilitarian touch to the overall design.

It showcases the roots and heritage where MbS comes from: Garments originally manufactured, the focus on all-natural materials and fabrics, inspired by timeless design classics and German workwear. The incorporation of functional details, such as triangle inserts under the arms, pockets and special stitching techniques, ensure that the garments are not only fashionable but also comfortable and timeless.

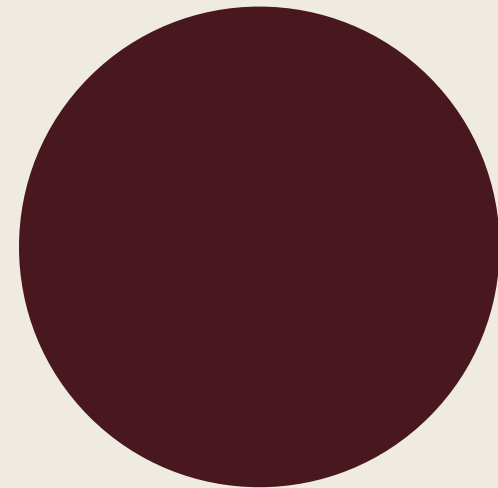
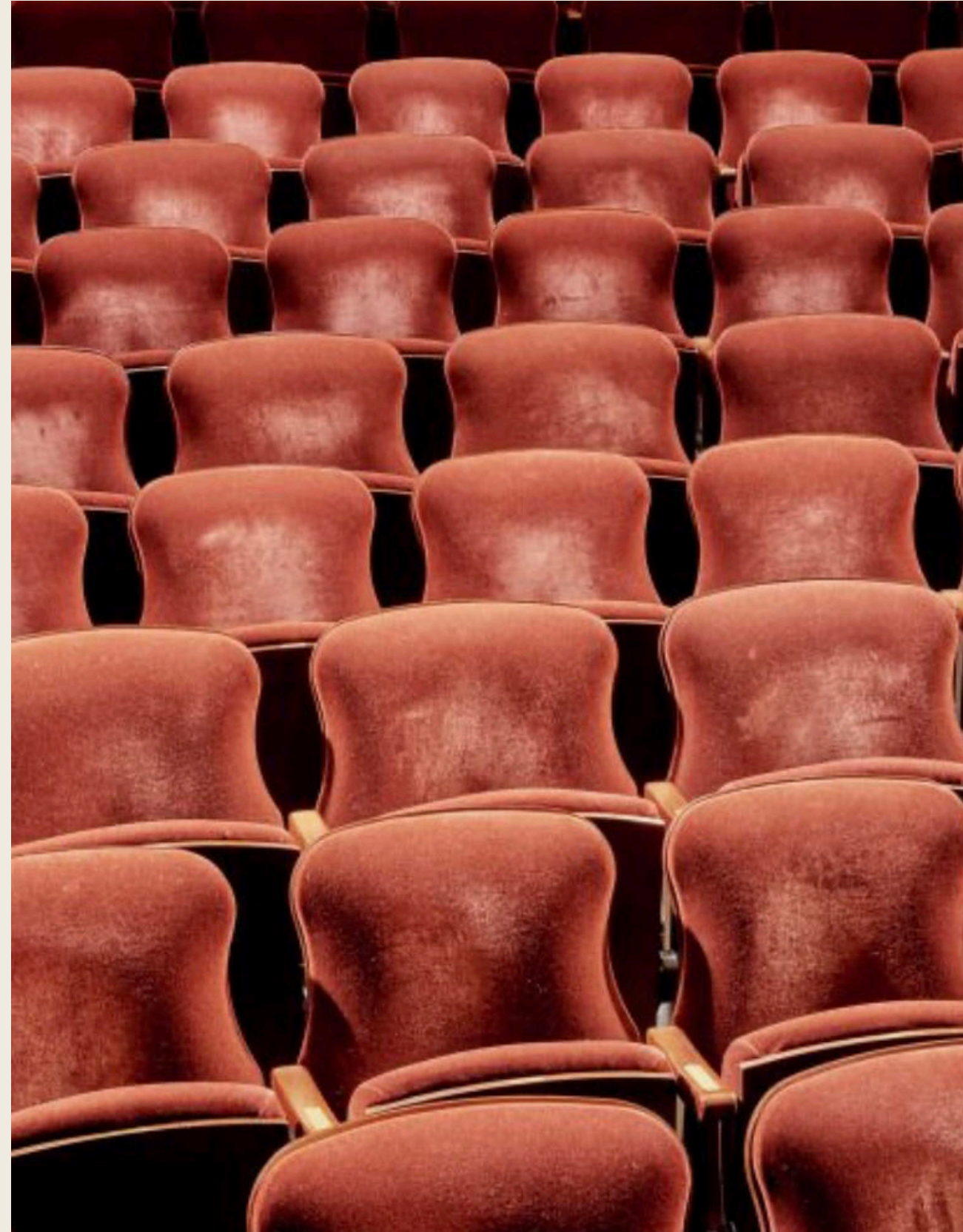
This blend of workwear elements with Mid-Century and early 70s inspiration creates a collection that is both functional and stylish, catering to the needs of the modern individual.



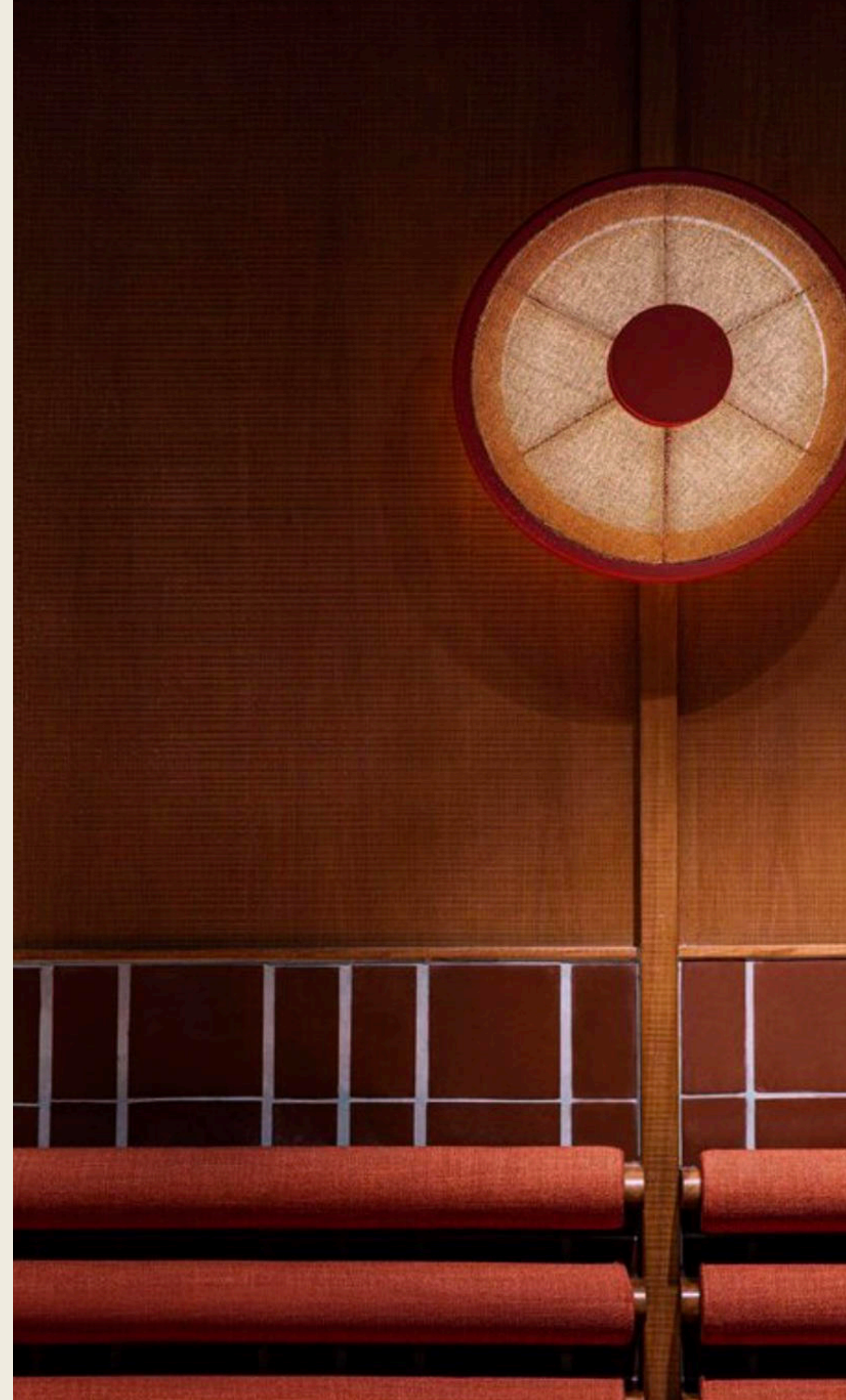
15 CHESTNUT



39 ROSEWOOD



506 BURGUNDY















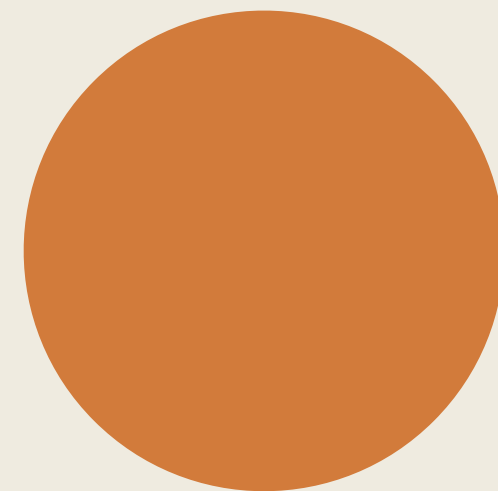
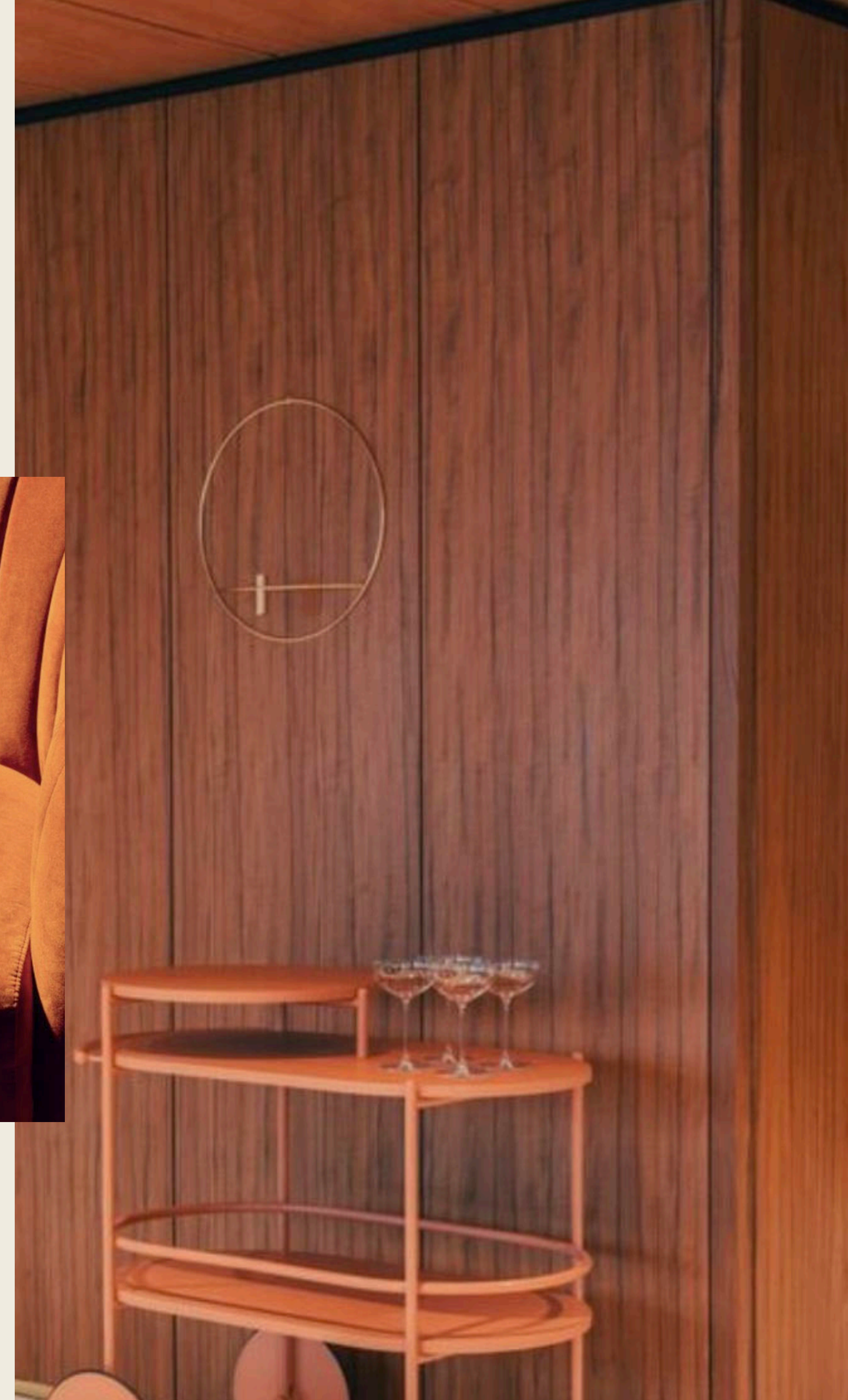




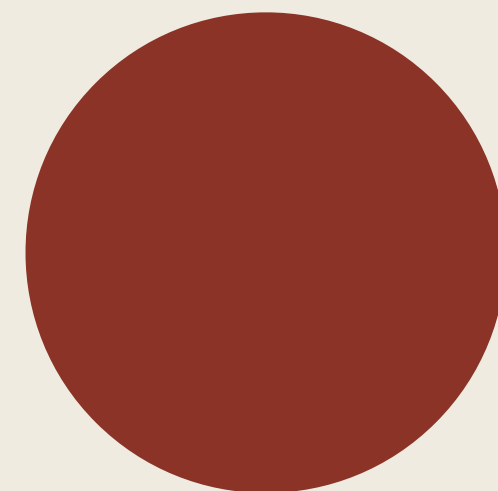




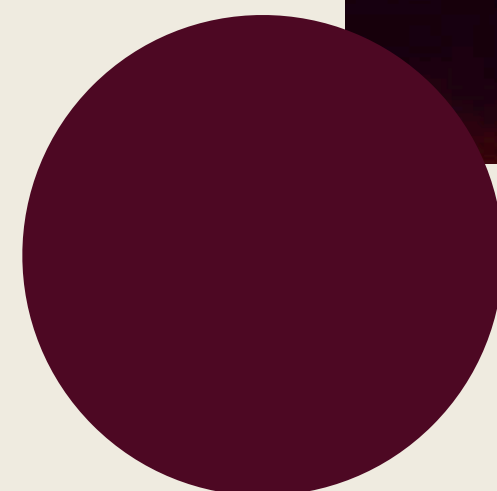




329 PUMPKIN



15 CHESTNUT



555 PLUM























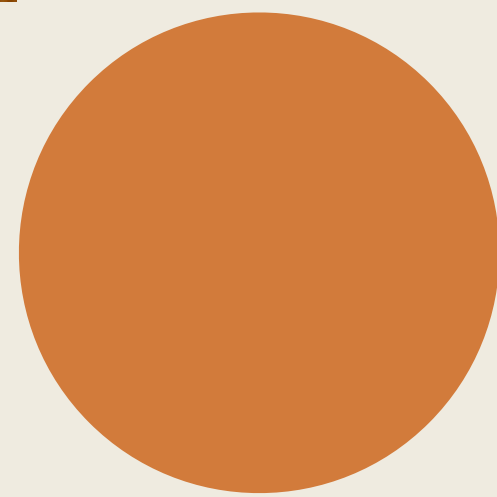
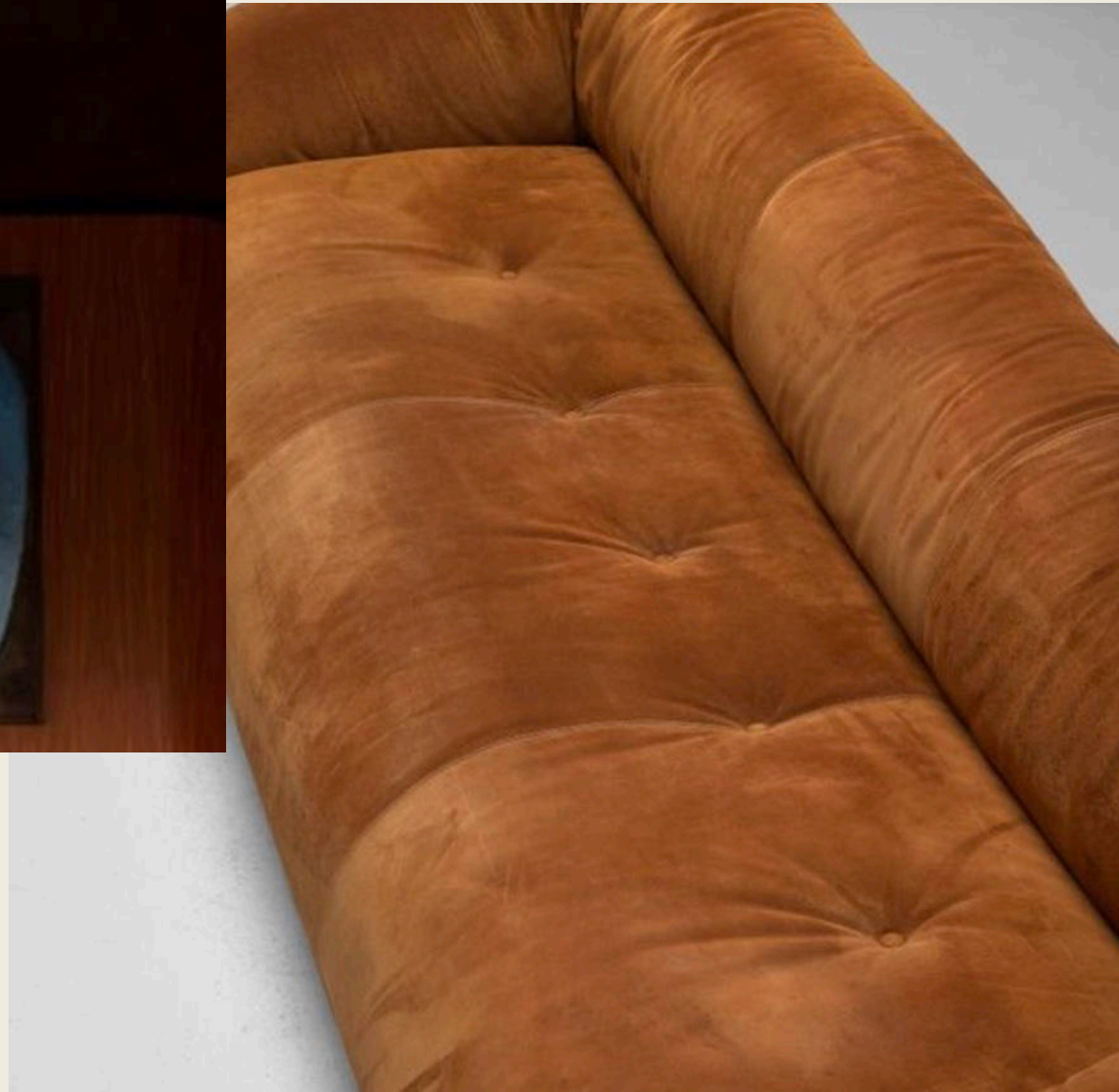
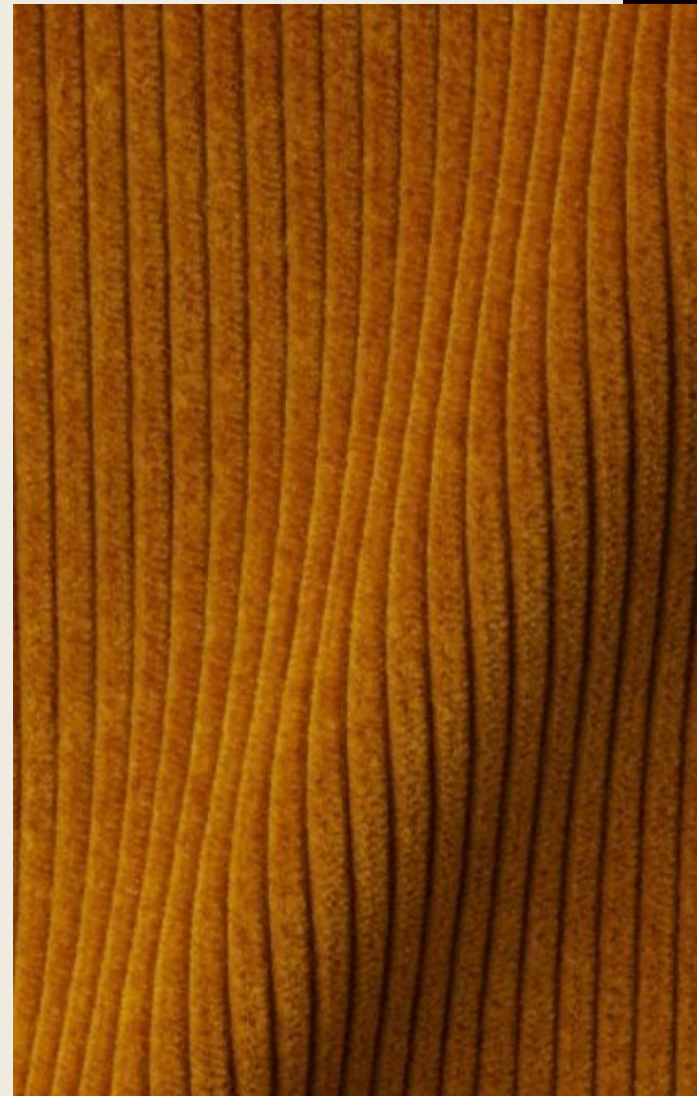
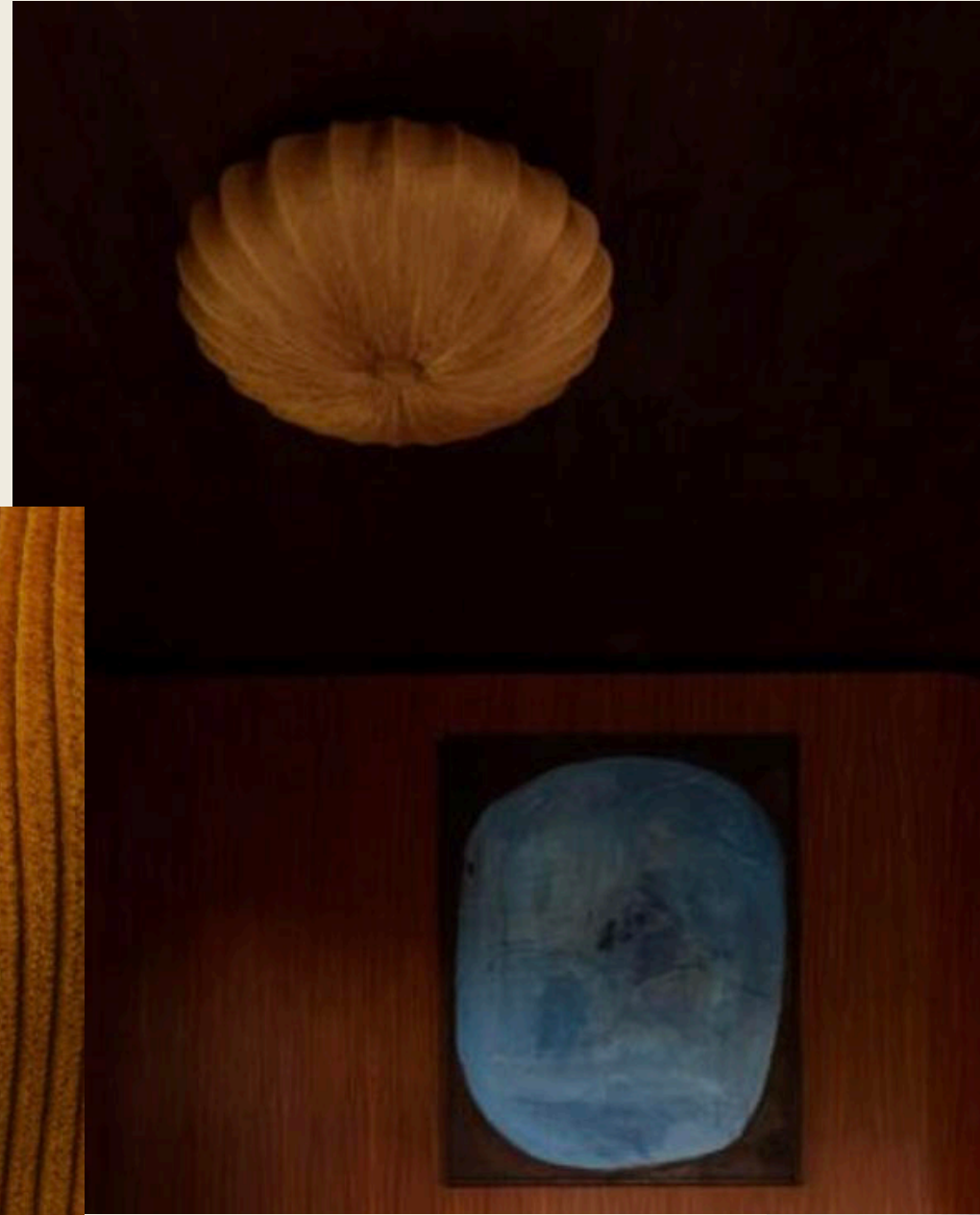




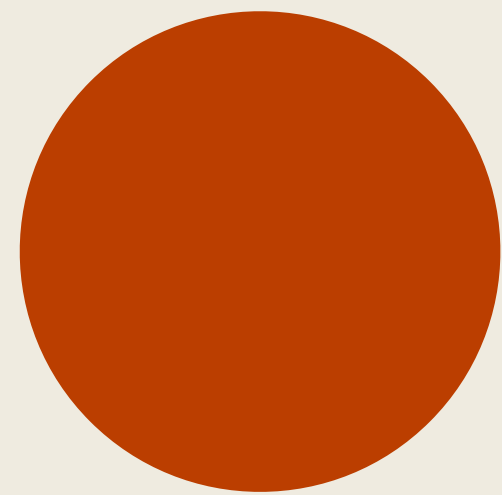




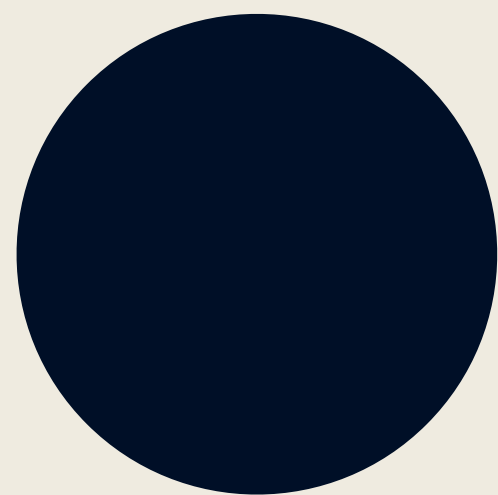




329 PUMPKIN



29 RUST

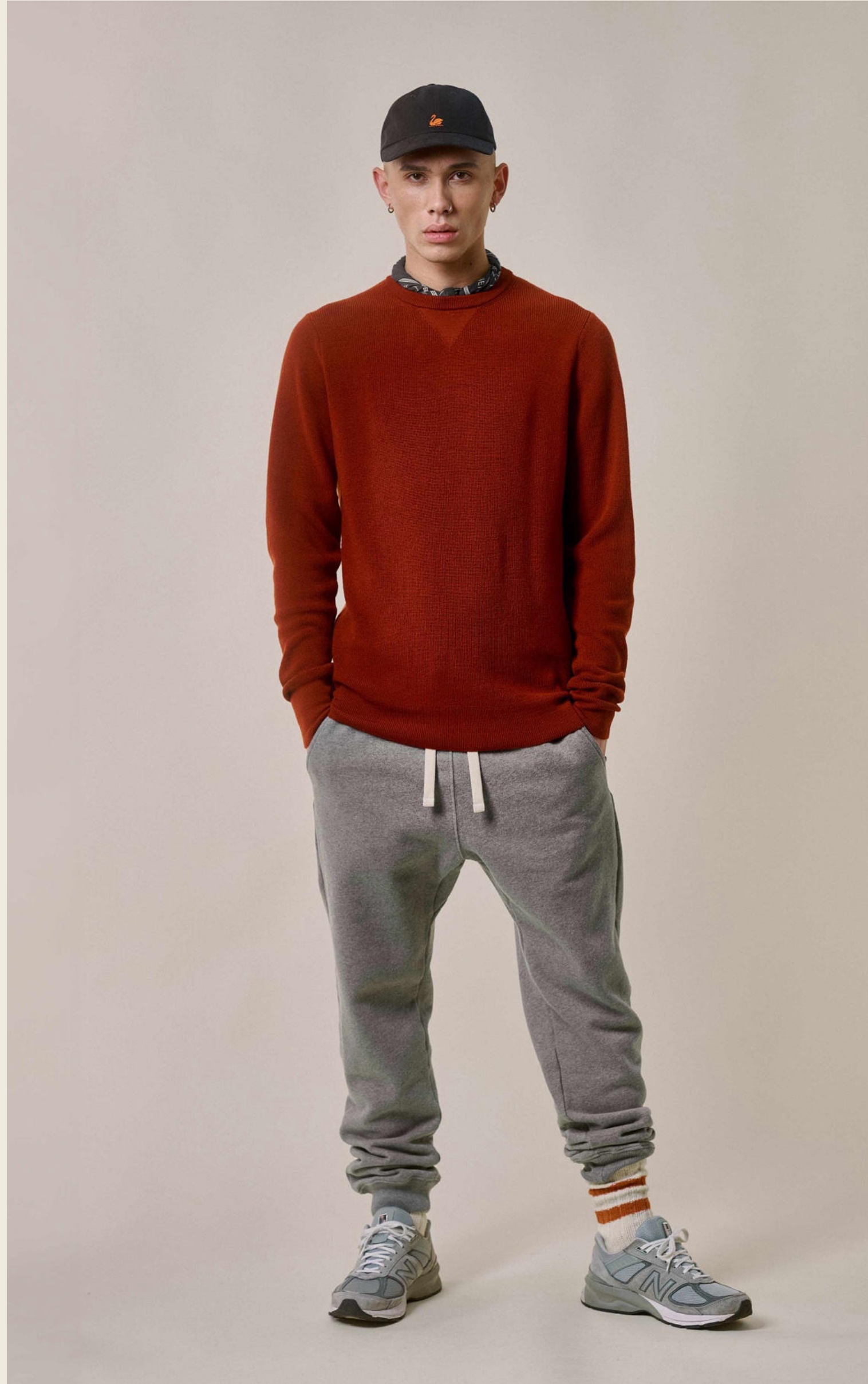


51 DARK NAVY











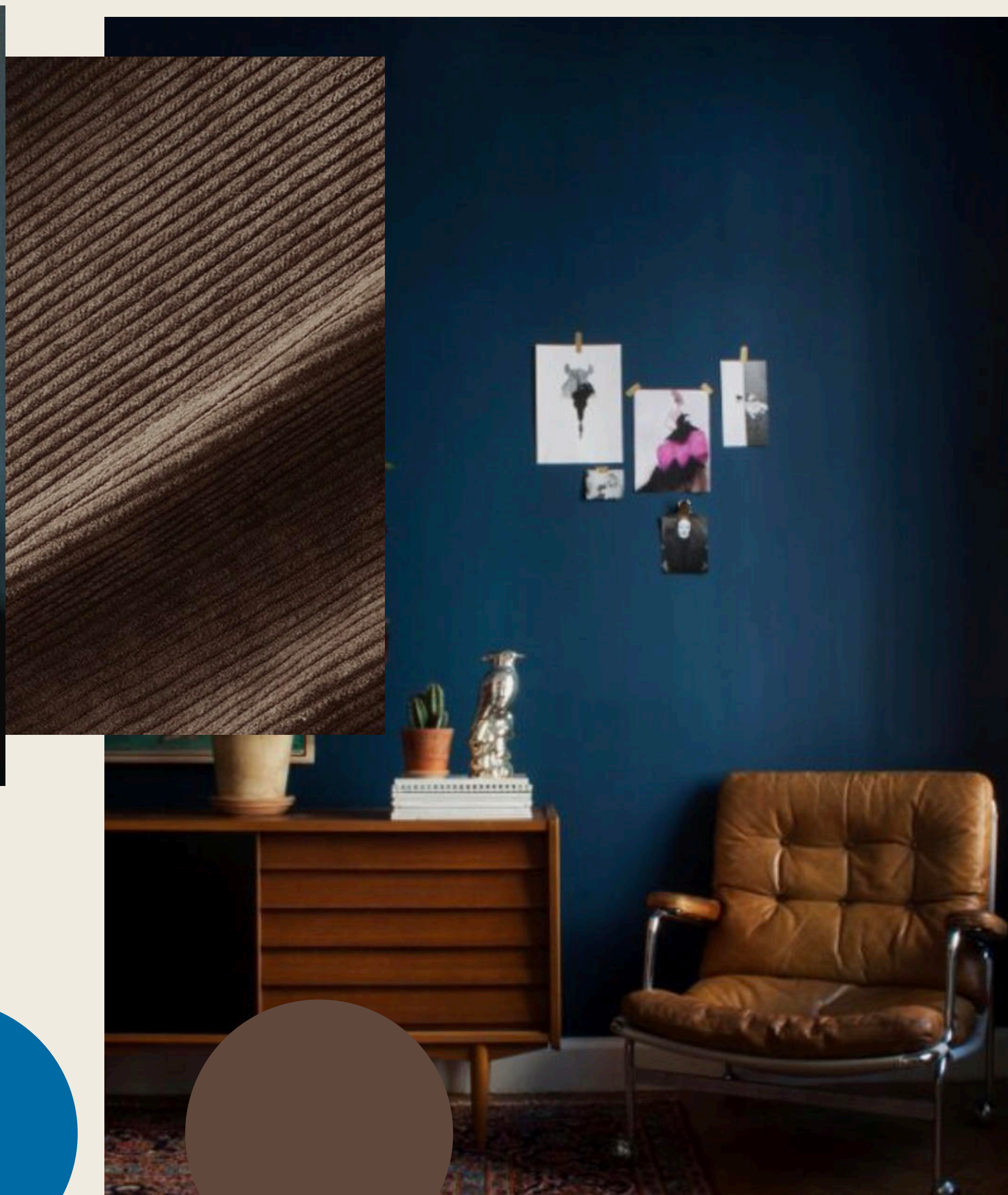




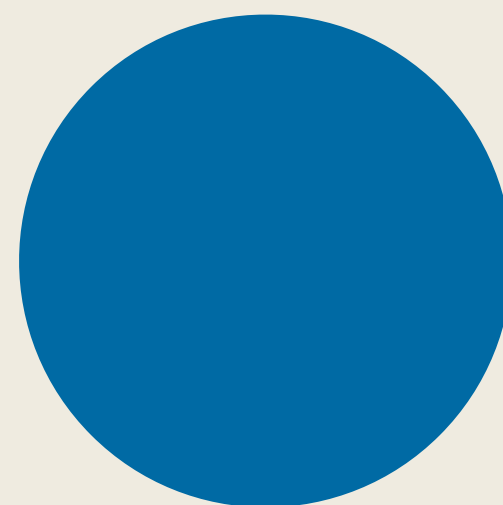








02 NATURE



608 CARBON BLUE



192 CHOCOLATE



























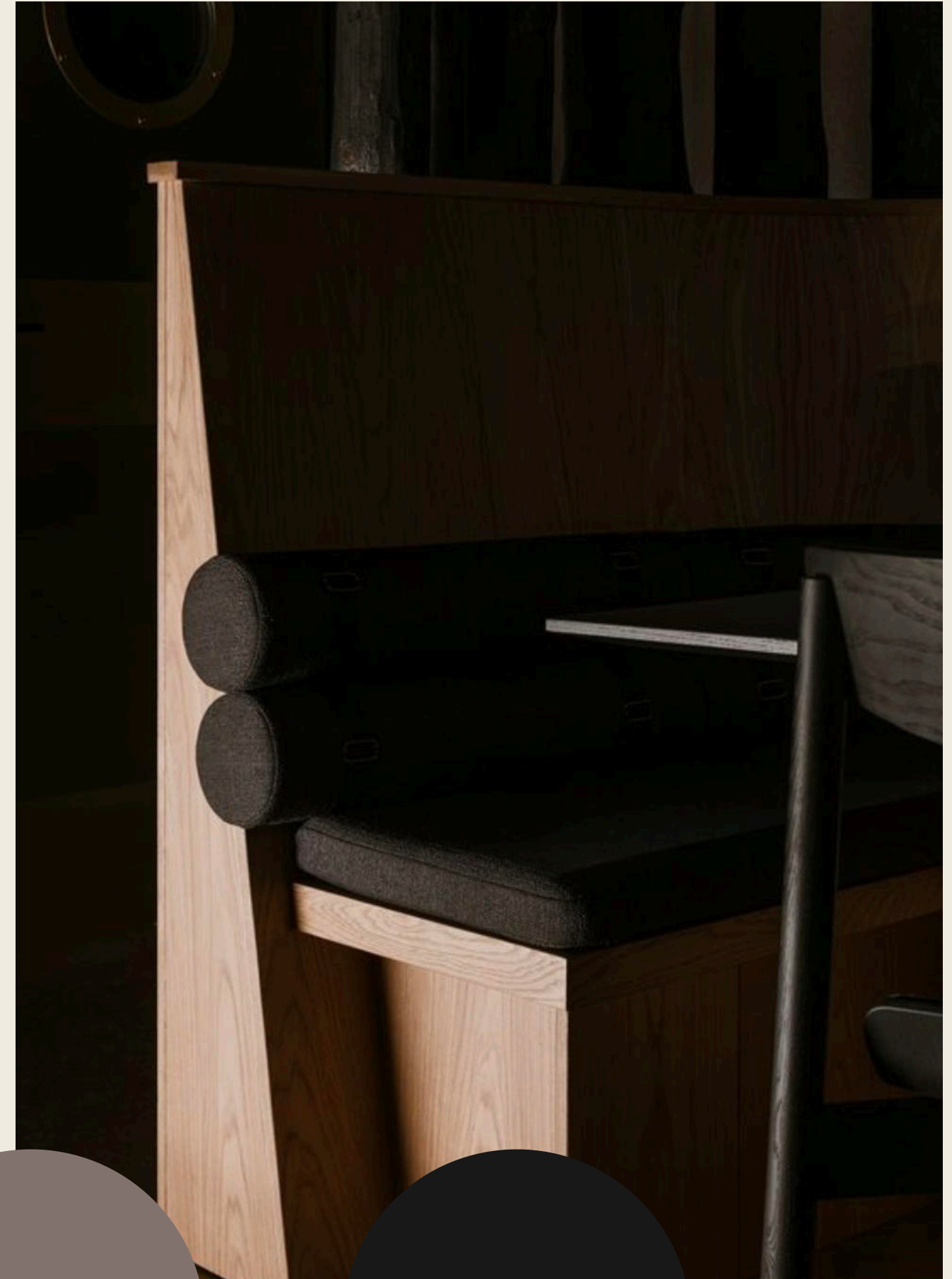
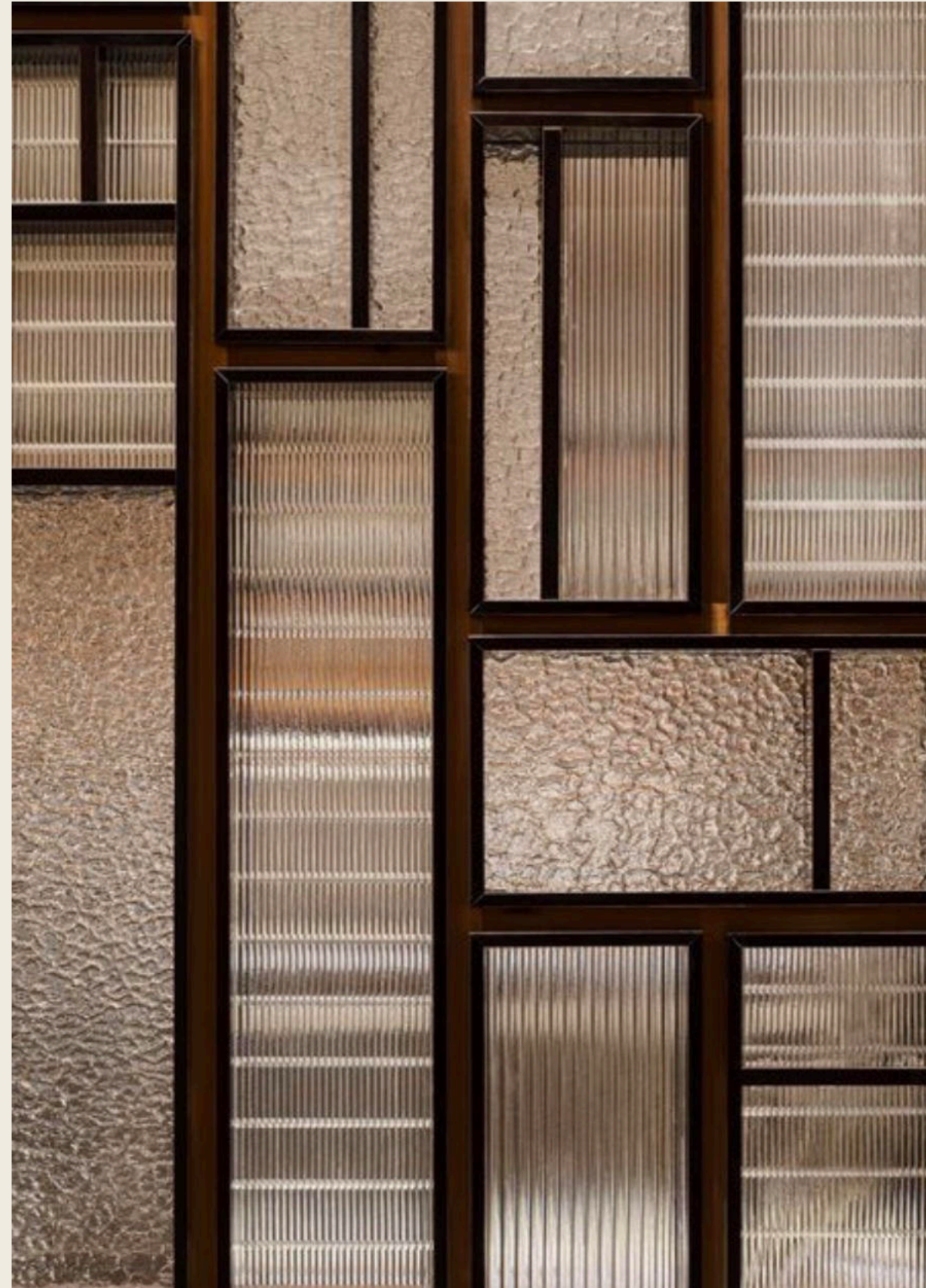
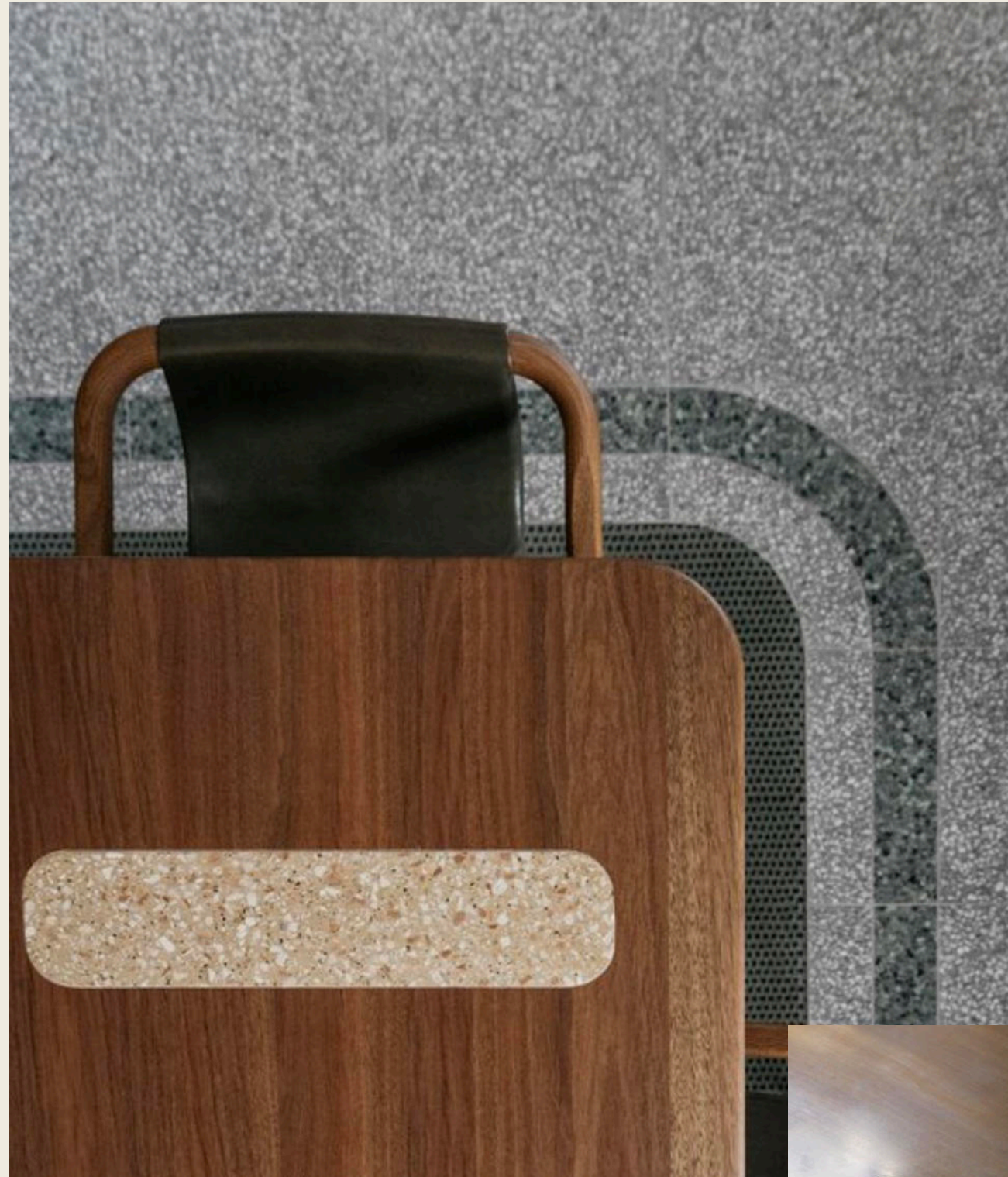












01 WHITE



06 GRAIN



99 DEEP BLACK









































Look and feel good. Every day!

Our Vision

We are guided...

by the idea of bringing more calm and ease into your daily life, and the world.

We want you to look and feel good.

Every day!



THANKS...
for your time and interest!

follow us



@merzbschwanen
#merzbschwanen
merzbschwanen.com
#thegoodweshare



WELCOME OUR NEW PRODUCTS

AW2024

THE CORDUROY JACKET



THE CORDUROY JACKET

1. Authentic, classic worker's jacket
2. Unisex
3. 100% organic cotton corduroy, 350g/qm | 10,3 oz/sq.yd.
4. The woven label is made on an original loom from 1890
5. Authentic classic processing inside
6. Real corozo buttons
7. Vegan & sustainable

COTTON CORDUROY SHIRT



THE NEW COTTON CORDUROY SHIRT

1. 100% organic cotton
2. Medium striped corduroy, 290g/qm | 8,6 oz/sq.yd.
3. Unisex
4. Real corozo buttons
5. Vegan & sustainable

COTTON CORDUROY PANTS



THE NEW COTTON CORDUROY SHIRT

1. 100% organic cotton
2. Medium striped corduroy, 290g/qm | 8,6 oz/sq.yd.
3. Styles for women and men
4. Real corozo buttons
5. Vegan & sustainable

BROKEN TWILL SHIRTS



THE NEW COTTON BROKEN TWILL SHIRTS

1. 100% organic cotton
2. Broken Twill, 305g/qm | 9,2 oz/sq.yd.
3. Styles for women and men
4. Real corozo buttons
5. Vegan & sustainable

BROKEN TWILL SKIRT



THE NEW COTTON BROKEN TWILL WOMEN'S SHIRT

1. 100% organic cotton
2. Broken Twill, 370g/qm | 11 oz/sq.yd.
3. Women's
4. Two side pockets and two back pockets
5. Vegan & sustainable

GIZA-COTTON-HEMP



GIZA COTTON | HEMP | ORGANIC COTTON

1. 35% real GIZA cotton | 50% organic cotton | 15% hemp
2. Heavy sturdy jersey, 240g/qm | 7,1 oz/sq.yd.
3. Boxy cropped fit
4. Side slit
5. Baseball Stitching
6. Swan embroidery – tone-in-tone
7. Vegan & sustainable
8. Styles for women and men

CHUNKY WOOL



THE NEW CHUNKY WOOL STYLES

1. Authentic optics
2. Printed label or woven label
3. Ribbed or waffle structure
4. 90% mulesing-free merino wool | 10% cashmere
5. Sustainable
6. Styles for women and men

ORDER TOOLS



ORDER TOOLS

In this lookbook you find moods, inspiration, overviews of all our products per line as photos, and the new products marked with ,NEW'.

To make your order with Merz b. Schwanen as convenient and easy as possible for you, we have prepared 7 different tools for you:

7 WAYS TO ORDER:

- **OVERVIEWS** (former 4-pager)
Here you see the collection at a glance
- **B2B Pre-Order Shop**
This is your relaxed and convenient way of ordering online. It's really easy: just log in and start browsing all products photographed on models, getting all information about the products, and placing your order. Just like you know it from a 'regular' online shop.
- **B2B Reorder Shop**
Did you run out of your all-time bestsellers? All good! We got you covered: just reorder in the B2B reorder shop. You'll see the quantities at a glance and can directly place your order and know what you can expect.
- **Agencies & Distributors**
Meet your friendly and supportive Merz b. Schwanen agents or distributors: they'll be happy to show you the collection and give you all information needed.
- **Tradeshows & Showrooms**
Visit us at SEEK Berlin, MAN/WOMAN Paris, MAN/WOMAN New York City, or in one of our showrooms.
- **PDF Order Form**
This is a well-known way that always works.
- **Call Robert**
Always a nice choice..;-))

Choose whatever is best for you. Then simply relax...we'll take care of the rest.

ORDER TOOLS

OVERVIEWS (former 4-pager)

Here you see the collection at a glance.

MEN'S AW2024

GOOD ORIGINALS – LOOPWHEELED IN GERMANY

All-time favorites I carry overs: PRE-ORDERING IS HIGHLY RECOMMENDED. The option to reorder depends on stock availability.
Seasonals: The new seasonal colors and styles are exclusively available for the PRE-ORDER AW2024.

JERSEY PROGRAM

STURDY COTTON

100% ORGANIC COTTON: Equipped with Side Seams for a more fitted and contemporary shape. The fabric of these T-shirts is made on our unique original Mid-Century jersey machine from the 1960s. The result: True Originals made of unique organic sturdy jersey, 230g/qm (6,8oz/sq.yd.).

crew T-shirt, classic fit
2M15
€30,- / €75,-

crew T-shirt, classic fit, cropped
2M15C
€30,- / €75,-

ETD: July-October

SIZE

4 / S

5 / M

6 / L

7 / XL

8 / XXL

COTTON 1-THREAD

100% ORGANIC COTTON LIGHT: 1-thread cotton, light and easy-going, 155g/qm (4,6oz/sq.yd.)

1950s crew T-shirt, classic fit
1950s
€28,- / €70,-

longsleeve, classic fit
1950sLS
€30,- / €75,-

T-shirt, relaxed fit
1940s
€28,- / €70,-

COTTON 2-THREADS

100% ORGANIC COTTON 2-threads cotton, sturdy and comfortable, 245g/qm (7,2oz/sq.yd.)

henley longsleeve, classic fit
206
€44,- / €110,-

T-shirt, classic fit
215
€34,- / €85,-

henley short sleeve, classic fit
207
€40,- / €100,-

COTTON 2-THREADS

100% ORGANIC COTTON 2-threads cotton, sturdy and comfortable, 245g/qm (7,2oz/sq.yd.)

T-shirt, relaxed fit
214
€38,- / €95,-

brief
254
€16,- / €40,-

button facing brief
255
€18,- / €45,-

merzbschwanen.com

WOMEN'S AW2024

GOOD BASICS – WOMEN'S

Enjoy these simply good basics. Made of best natural materials. Responsibly manufactured in Portugal.
All-time favorites I carry overs: PRE-ORDERING IS HIGHLY RECOMMENDED. The option to reorder depends on stock availability.
Seasonals: The new seasonal colors and styles are exclusively available for the PRE-ORDER AW2024.

JERSEY PROGRAM

LIGHT COTTON

100% ORGANIC COTTON: soft, long-staple high twisted cotton, light and pleasant, 130g/qm (3,8oz/sq.yd.). ETD_01

T-shirt, classic fit
WCT01
€22,- / €55,-

T-shirt, classic fit
WVTO1
€22,- / €55,-

T-shirt, loose fit
WLCT01
€24,- / €60,-

ETD_01: July

ETD_02: August

ETD_03: September

SIZE

3 / XS

4 / S

5 / M

6 / L

COTTON-HEMP LIGHT

85% ORGANIC COTTON | 15% HEMP: ALL PLANT-BASED – ALL GOOD! GOTS certified, completely regenerative, all-natural, slightly structured, vegan, 155g/qm (4,6oz/sq.yd.). ETD_01

T-shirt, relaxed fit
WHPT02
€28,- / €65,-

These styles are part of the ALL PLANT-BASED – ALL GOOD! line

GIZA COTTON-HEMP STURDY

50% ORGANIC COTTON | 35% GIZA COTTON | 15% HEMP: real long-staple GIZA cotton, sustainable hemp, sturdy grip yet soft, 240g/qm (7,1oz/sq.yd.). ETD_01

T-shirt, boy cropped fit
WGHPO1
€40,- / €100,-

longsleeve, boy cropped fit
WGHPLSO1
€44,- / €115,-

PIMA SLUB LIGHT

100% PIMA ORGANIC COTTON LIGHT, lightweight, soft, slightly slub optics, 130g/qm (3,8oz/sq.yd.). ETD_01

T-shirt, relaxed fit
WSCT20
€24,- / €60,-

longsleeve, relaxed fit
WSLS21
€26,- / €65,-

merzbschwanen.com

MEN'S AW2024

GOOD BASICS – MEN'S

Enjoy these simply good basics. Made of best natural materials. Responsibly manufactured in Portugal.
All-time favorites I carry overs: PRE-ORDERING IS HIGHLY RECOMMENDED. The option to reorder depends on stock availability.
Seasonals: The new seasonal colors and styles are exclusively available for the PRE-ORDER AW2024.

JERSEY PROGRAM

PIMA SLUB

100% ORGANIC PIMA COTTON: slub optics, long-staple, 165g/qm (4,9oz/sq.yd.). ETD_01

unisex T-shirt, relaxed fit
SCT04
€26,- / €65,-

ETD_01: July

ETD_02: August

ETD_03: September

SIZE

4 / S

5 / M

6 / L

7 / XL

8 / XXL

COTTON-HEMP LIGHT

85% ORGANIC COTTON | 15% HEMP: ALL PLANT-BASED – ALL GOOD! GOTS certified, vegan, completely regenerative, all-natural, slightly structured, 155g/qm (4,6oz/sq.yd.). ETD_01

T-shirt, relaxed fit
HTPT01
€28,- / €65,-

These styles are part of the ALL PLANT-BASED – ALL GOOD! line

GIZA COTTON-HEMP STURDY

50% ORGANIC COTTON | 35% GIZA COTTON | 15% HEMP: real long-staple GIZA cotton, sustainable hemp, sturdy grip yet soft, 240g/qm (7,1oz/sq.yd.). ETD_01

T-shirt, boy oversized fit
GHP01
€44,- / €110,-

longsleeve, boy oversized fit
GHPLS01
€52,- / €130,-

We make original, organic, simply good basics. Garments for all, who appreciate good timeless design, and reliable products to look and feel good, every day!

Merz b. Schwanen – the good basic!

merzbschwanen.com

ORDER TOOLS

B2B Pre-Order Shop

This is your relaxed and convenient way of ordering online.

your in PRE-ORDER

basket black: your in the PRE-ORDER shop

PRE-ORDER RE-ORDER ABOUT SALES KITS CONTACT Q DE RE 2 PRE-4 MEIN KONTO

Produkte / Pre-Order AW2020 menswear / Men's Knopfleiste

206 ——— article number

40,00 € excl. MwSt. ——— price

Farbe: 01 white ——— color options

GRÖSSEN	3XS	4XS	5XS	6XS	7XS	8XS	9XS
ORDER	0	0	0	0	0	0	0

Type in your wished quantities

ZUR PRE-ORDER HINZUFÜGEN ——— *klick button = add to pre-order*

Beschreibung
GOOD ORIGINALS
GOOD ORIGINALS | SAISONAL

Gefertigt in klassischer Art, ist dieses Knopfleistenhemd auch heute noch stets ein treuer Begleiter. Und wenn es doch mal 'heiß' hergeht – einfach den oberen Knopf öffnen. Die schmale und doch lässige Passform passt zu jedem Outfit. Reine Bio-Baumwolle – fühlt sich angenehm auf der Haut an. Die 2-fädige Ware ist langlebig und kernig zugleich.

Produktion: Gefertigt in Deutschland ——— *material info*

Material +
Details + *all details*
Form & Fit + *classic or relaxed fit?*
Gut zu wissen + *further important info*

ORDER TOOLS

B2B Pre-Order Shop

This is your relaxed and convenient way of ordering online.





102

MEN'S LOOPWHEELED HENLEY, 5,50Z, CLASSIC FIT

119.90 € excl. VAT

Color: 01 white

— Size Matrix

SIZES	4 S	5 M	6 L	7 XL	8 XXL
STOCK	1	13	41	12	11
ORDER	<input style="width: 30px;" type="text" value="1"/>	<input style="width: 30px;" type="text" value="0"/>	<input style="width: 30px;" type="text" value="0"/>	<input style="width: 30px;" type="text" value="0"/>	<input style="width: 30px;" type="text" value="0"/>

ADD TO CART
☆

Description -

GOOD ORIGINALS | ALWAYS-BACK-IN-STOCK

An original flea market find from 1911 is the template for this "worker button-up shirt". Special attention: The authentic processing of the neckline! The collar is turned over very fine by hand twice - real skill is required. This is exactly how the neckline of this shirt was originally processed 100 years ago, since the comfortable modern edging machines did not yet exist. In addition, the attached button placket made of cotton fabric and the original laundry buttons make this shirt a special eye-catcher. And of course, the patched neck mirror must not be missing today, as it was then for hard-working men.

Production: [Made in Germany](#)

Form & Fit +

Details +

Material +

Care +

PRODUCTS

CARRY OVER & SEASONAL STYLES

- CARRY OVER STYLES

OUR CARRY OVER STYLES ARE OUR ALL-TIME FAVORITES and BESTSELLERS.

REORDERING MIGHT BE POSSIBLE DEPENDING ON STOCK AVAILABILITY.

We highly recommend pre-ordering these styles to ensure you have all the quantities as needed and wished in your store.

- SEASONAL STYLES

THESE STYLES ARE LIMITED AND ONLY AVAILABLE WHEN PRE-ORDERED.

You can't reorder these styles after the AW2024 pre-order deadline.

MULESING-FREE MERINO WOOL

Why do we use certified mulesing-free merino wool?

The mulesing treatment is a painful surgical procedure for sheep, primarily used in Australia due to flystrike for nearly 100 years.

Flystrike is when blowflies lay their eggs in the folds of skin around the tail area of the sheep (for nearly 100 years), the eggs then hatch into larvae and then feed off the flesh of the sheep, risking blood poisoning and death if untreated.

To reduce the risk of flystrike, wool producers have traditionally cut flaps of skin from around the lamb's breech and tail to create an area of bare, scarred skin, which is less likely to attract blowflies. Until recently, this procedure was carried out without any pain relief.

While flystrike does present a serious animal welfare concern, mulesing causes great pain and stress to sheep. Except in Victoria, there is currently no mandatory requirement for producers to apply anaesthetic or pain relief during and after the procedure.

We use certified mulesing-free merino wool for our garments.

source index:
<https://www.rspca.org.au/take-action/sheep-mulesing>

Invoice for our mulesing-free merino wool

FILVIVIT

100854 Invoice Address:
BANINO ALMEIDA & FILVOS LDA.
 RUA NOVA SENHORA DE FATIMA
 2285-102 BOMBU
 PORTOFALGO

Invoice Number: 5187265 pagina n° 001
 Date: 4/12/2021
 V.A.T. Number: PT501121783
 Delivery Terms: D.A.F.
 Shipment By: (FF) DHL - INTERNATIONAL
 Ref: 0012 FLV/00

(FF) DHL - INTERNATIONAL
 Causale: Vendita non per commercio al minuto

Order	Colour	Number	N° Qty	Dye	Weight	Weight	Price	Site	Amount	
			Order	Batch	Net (KG)	Gross (KG)	/KG		Total	
Customs Tariff/Goods Description: 51071090 ML ANS 030 02 ANICO ROYF NM 2/30 - 100% WOOL										
WORTED 1000 - EXTRAFINE MERINO WOOL SHIRING RESISTANT										
Reference	D.E.T.	Facking List	0018527	04/12/2021						
229197	W0044	W0044	W000	04200	5,390	5,730	25,000	W001	143,25	
Total Weight per Count/Article					KG	5,390	5,730			
Total WEIGHT					KG	5,390	5,730			
DDEI Dettabile Compagnatura 1°									2,000	
RIF. Order Customer:										
329397										
MULESING FREE										
Total N° Cartoni	00001	Gross Weight KG	6,34							
Total Amount	143,25	Total Discount	0,00	143,25	V.A.T. amount		Value	EUR		
							Net to be Paid		143,25	

DELIVERY

OUR DELIVERIES

We will now offer three delivery dates for the AW24 collection.

This means you have more flexibility and convenience when it comes to receiving your orders.

Our multiple delivery date options ensure that you can choose the most suitable time for collection. Simply select the date that works best for you and we'll make sure your order is ready for pickup. Enjoy the convenience of our expanded delivery options and experience a seamless and efficient service.

WHAT'S THE DIFFERENCE?

COMPARISON OF PRODUCTS

1950s

Both are made of organic cotton jersey light, 155g/qm | 4,6 oz/sq.yd.



• Paneled neckline

• Classic fit

1940s

Both are made of organic cotton jersey light, 155g/qm | 4,6 oz/sq.yd.



• Attached wide rib on neckline

• Relaxed fit

1950s

It's made of organic cotton jersey light, **155g/qm | 4,6 oz/sq.yd.**



- Cotton jersey light,
155g/qm | 4,6 oz/sq.yd.

- Double needle seams

215

It's made of organic cotton jersey, **245g/qm | 7,2 oz/sq.yd.**



- Cotton jersey,
245g/qm | 7,2 oz/sq.yd.

- Baseball seams

215

Both are made of organic cotton jersey, 245g/qm | 7,2 oz/sq.yd.



• Paneled neckline

• Classic fit

214

Both are made of organic cotton jersey, 245g/qm | 7,2 oz/sq.yd.



• Paneled with wide diagonal rib on neckline

• Relaxed fit

1940s

It's made of organic cotton jersey light, **155g/qm | 4,6 oz/sq.yd.**



- Attached wide rib on neckline
- Cotton jersey light, 155g/qm | 4,6 oz/sq.yd.
- Double needle seams

214

It's made made of organic cotton jersey, **245g/qm | 7,2 oz/sqyd.**



- Paneling with wide diagonal rib on neckline
- Cotton jersey, 245g/qm | 7,2 oz/sq.yd.
- Baseball seams

• Relaxed fit

KEY FACTS

Brand Name:	Merz b. Schwanen
Foundation year:	Originally 1911 by Balthazar Merz, revived in 2010 by Gitta & Peter Plotnicki
Specialty:	Unique fabrics made on authentic and original loopwheelers from 1920s to the 1960s, creating sustainable and long lasting basics
Collections:	Men's, Women's, Unisex, Home
Lines:	Good Originals, Good Basics
Products types:	T-shirts, henleys, tops, sweatshirts, sweatpants, wovens (shirts, pants, jacket, dresses), a collaboration sneaker, knitwear, accessories, underwear, socks, pajamas
Key materials:	organic cotton, recycled cotton, high-quality mulesing-free merino wool, recycled wool, and cashmere
Main values:	Sustainable and responsible, timeless & thoughtful design, natural high-quality materials, socially responsible and honest manufacturing, transparency
Production sites:	Germany & Portugal
Head quarter:	Berlin-Mitte, Germany
Flagship Store:	Gormannstrasse 25, Berlin-Mitte, Germany
Team:	21 team members in the headquarter, in Berlin, in the production site Germany, and remote
Designers:	Gitta & Peter Plotnicki
Founders:	Gitta Plotnicki (Co-Founder & Chief Creative Director) & Peter Plotnicki (Co-Founder & CEO)